

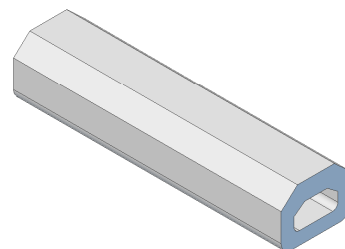
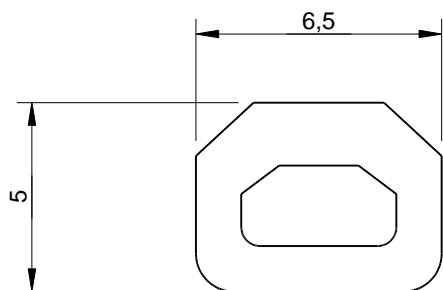
1

2


3

4

| | | | | |
|-------|---------------|------|-----------|---------|
| RevNo | Revision note | Date | Signature | Checked |
|-------|---------------|------|-----------|---------|



Grade : CR 50° Sh.A / VMQ 40° Sh.A

| | | | | | | |
|--|------------|---|-----------|--|-----------------------|----------------------------|
| Itemref | Quantity | Title/Name, designation, material, dimension etc | | | Article No./Reference | |
| Drawn by AS | Checked by | Approved by - date | File name | Date 23/08/2013 | Scale 5 : 1 | |
| limburgse kunststofonderneming LIKON BV ELASTOMERS PLASTICS ALUMINIUM | |  Kerkstraat 101 NL-5411CK Zeeland T +31/486-450050 sales@likon.info www.likon.info | | IFS section 6.5x5 IFS# 11 | | Edition Sheet 1 of 1 |

1

4